



LISTING INFORMATION OF Alucoil - larson® by Alucoil® FR 4 mm and 6 mm ACM Panels

SPEC ID: 28441

Alucoil North America LLC  
1976 Joe Rogers Jr Blvd

Manning, SC 29102

This report is for the exclusive use of Intertek's Client and is provided pursuant to the agreement between Intertek and its Client. Intertek's responsibility and liability are limited to the terms and conditions of the agreement. Intertek assumes no liability to any party, other than to the Client in accordance with the agreement, for any loss, expense or damage occasioned by the use of this report. Only the Client is authorized to permit copying or distribution of this report and then only in its entirety. Any use of the Intertek name or one of its marks for the sale or advertisement of the tested material, product or service must first be approved in writing by Intertek. The observations and test results in this report are relevant only to the sample tested. This report by itself does not imply that the material, product, or service is or has ever been under an Intertek certification program.

larson® by Alucoil® FR 4 mm and 6 mm ACM Panels consist of 0.5 mm aluminum skins on both sides with a proprietary, fire resistant (FR) core with a total panel thickness of 4mm or 6 mm.

**RATINGS**

| ASTM E84                               | FLAME SPREAD INDEX | SMOKE DEVELOPED INDEX |
|--|--------------------|-----------------------|
| larson® by Alucoil® FR 4 mm ACM Panels | 5                  | 5                     |

| CAN/ULC S102                           | FLAME SPREAD INDEX | SMOKE DEVELOPED INDEX |
|--|--------------------|-----------------------|
| larson® by Alucoil® FR 6 mm ACM Panels | 0                  | 0                     |

| ASTM E119 / CAN/ULC S101   | FIRE RESISTANCE | DESIGN NUMBER   |
|--|-----------------|-----------------|
| larson® by Alucoil® FR 4 mm ACM Panels*  | 1 hour          | ANA/MCMWP 60-01 |
| *The 1-hour fire resistance rating is applicable to only the interior side of the wall system. See Design Listing for further details. |                 |                 |

| CAN/ULC S134                           | HEAT FLUX INDEX @ 3.5 m | FLAME SPREAD |
|--|-------------------------|--------------|
| larson® by Alucoil® FR 6 mm ACM Panels | 24.93 kW/m <sup>2</sup> | 2.5 m        |

See Design Listing ANA/MCMWP 25-01.

The NFPA 285 (Design Listing ANA/MCMWP 30-01) and ICC-ES AC25 requirements were met using the larson® by Alucoil® FR 4 mm ACM Panels

| <u>Attribute</u>    | <u>Value</u>               |
|---------------------|----------------------------|
| CSI Code            | 07 42 13 Metal Wall Panels |
| Fire Resistance     | 1 Hour Fire Rating         |
| Listed or Inspected | LISTED                     |
| Report Number       | G100624209                 |
| Criteria            | CAN / ULC S134 (1992)      |
| Criteria            | CAN / ULC S101 (2007)      |
| Criteria            | NFPA 285 (2006)            |
| Criteria            | ASTM E119 (2010)           |
| Criteria            | ASTM E84 (2010b)           |
| Criteria            | CAN / ULC S102 (2010)      |

|                          |                    |
|--------------------------|--------------------|
| Criteria                 | ASTM E84 (2012)    |
| Criteria                 | ASTM E119 (2012)   |
| Criteria                 | NFPA 285 (2012)    |
| Criteria                 | ICC-ES AC25 (2010) |
| Intertek Services        | Certification      |
| Listing Section          | WALL ASSEMBLIES    |
| Test Original Issue Date | December 9, 2010   |
| Verification Testing     | YES                |
| Verification Test Type   | FTIR               |

## DRAWING INDEX

ANA/MCMWP 25-01

ANA/MCMWP 30-01

ANA/MCMWP 60-01

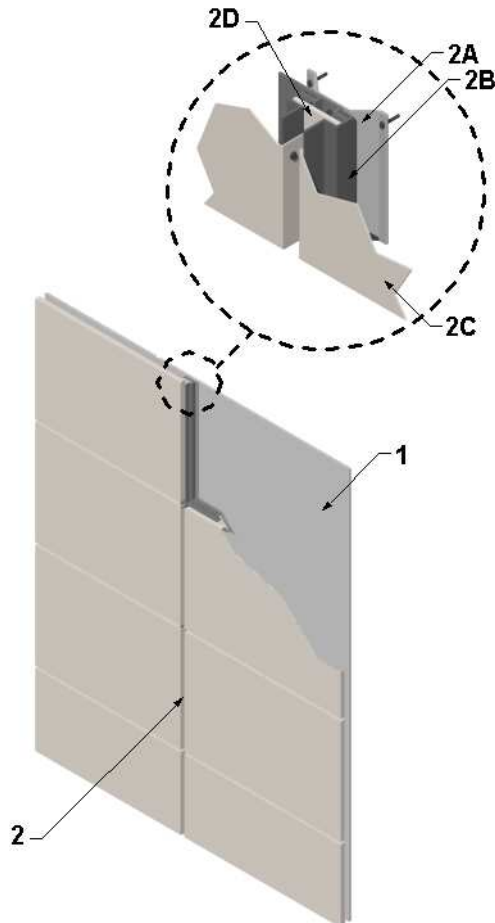
# ANA/MCMWP 25-01

Division 7 – Thermal and Moisture Protection  
07 42 00 Wall Panels  
07 42 13.23 Metal Composite Material Wall Panels

Page 1 of 2

Design Number: ANA / MCMWP 25-01  
EXTERIOR WALL SYSTEMS  
Alucoil® North America, LLC  
Iarson® by Alucoil® FR 6 mm ACM Panels  
CAN/ULC S 134 (1992)

Meets the Requirements of Section 3.1.5.5 of the National Building Code of Canada, 2010



1. EXTERIOR WALL ASSEMBLY:  
Incorporate construction features in the exterior wall assembly as described in Item 2. Secure exterior veneer to existing wall assembly as follows:

2. CERTIFIED COMPANY: Alucoil® North America, LLC

CERTIFIED PRODUCT: Aluminum Composite Panels

Date Created: August 28, 2012  
Project No: 100596374SAT-018C



©Intertek

## ANA/MCMWP 25-01 (page 2 of 2)

**Division 7 – Thermal and Moisture Protection**  
**07 42 00 Wall Panels**  
**07 42 13.23 Metal Composite Material Wall Panels**

Page 2 of 2

MODEL: larson® by Alucoil® FR 6 mm  
ACM Panels

EXTERIOR VENEER: Install an ACM  
(Aluminum Composite Metal Panel)  
system consisting of the following  
elements:

- A. HAT BAR: Secure hat bars oriented vertically to the base wall assembly (Item 1) using appropriately sized fasteners specified by the manufacturer. Hat bars coincide with the vertical joints of the aluminum composite panel (Item 2C) vertical joints.
- B. SUPPORT PANEL CLIPS: Install support panel clips to the top side of the larson® by Alucoil® FR 6 mm ACM Panels (Item 2C) spaced approximately 12 in. on center (oc) then secure assembly to the exterior side of hat bar (Item 2A).
- C. ALUMINUM COMPOSITE METAL PANEL: Install larson® by Alucoil® FR 6 mm ACM Panels by friction fitting the bottom of the panel into the starter extrusion (not show), and secure the top of the panel using two 3/4 in. (19 mm) pan head fasteners inserted through the support panel clips (Item 2B) into the hat bar (Item 2A).
- D. SPLINE: Insert and friction fit a nominal 2 in. wide pre-cut strip of larson® by Alucoil® FR 6 mm ACM Panel in the support panel clips (Item 2B) in all vertical and horizontal panel joints.

Date Created: August 28, 2012  
Project No: 100596374SAT-018C



©Intertek

# ANA/MCMWP 30-01

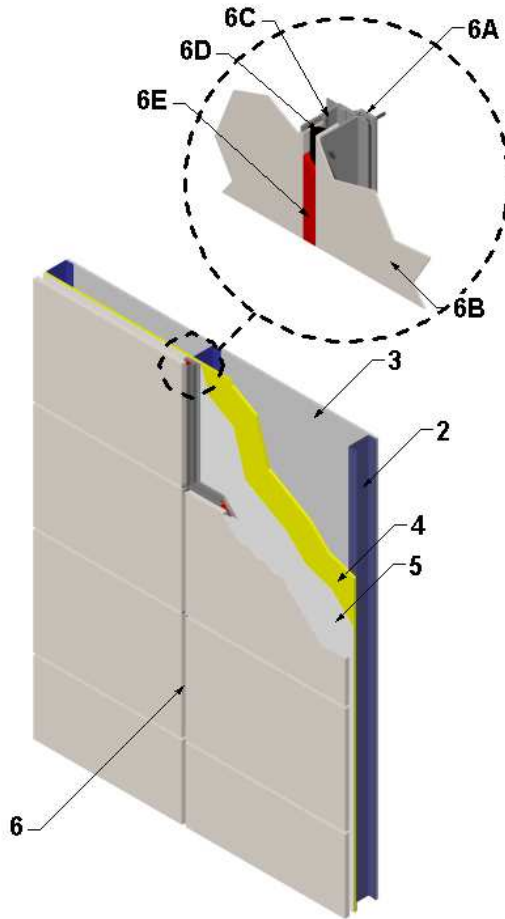
Division 7 – Thermal and Moisture Protection  
 07 42 00 Wall Panels  
 07 42 13.23 Metal Composite Material Wall Panels

Page 1 of 2

---

Design Number: ANA / MCMWP 30-01  
 EXTERIOR WALL SYSTEMS  
 Alucoil® North America, LLC  
 larson® by Alucoil® FR 4 mm ACM Panels  
 NFPA 285 – Meets Conditions of Acceptance

---



**Item 1: Exterior Wall Assembly**

1. EXTERIOR WALL ASSEMBLY: Incorporate construction features in the exterior wall assembly as described in Items 2 through 6.
2. STEEL FRAMING (ITEM 2): Install nominal 3-5/8 in., 20 GA steel studs

spaced nominally 24 in. on center (oc). Attach steel studs to 20 GA top and bottom steel tracks using nominal 7/16 in. long pan head framing screws attached to the front and back of each steel stud.

Date Created: August 28, 2012  
 Project No: 100596374SAT-018B



©Intertek

**ANA/MCMWP 30-01 (page 2 of 2)****Division 7 – Thermal and Moisture Protection****07 42 00 Wall Panels****07 42 13.23 Metal Composite Material Wall Panels**

Page 2 of 2

3. INTERIOR GYPSUM: Apply one (1) layer of 5/8 in. thick, Type X gypsum board to the interior side of the steel framing (Item 2) with the long dimension parallel to the steel studs. Secure using #6 1-1/4 in. long, Type S, screws spaced nominally 8 in. oc around the perimeter and 12 in. oc in the field.
- A. JOINT TAPE AND COMPOUND – (Not Shown) Apply a level 2 finish of vinyl or casein, dry or premixed joint compound applied in two coats to all exposed fastener heads and gypsum board joints. Embed minimum 2 in. wide paper, plastic, or fiberglass tape in first layer of compound over joints in gypsum board (Item 3).
4. EXTERIOR SHEATHING: Install 5/8 in. thick DensGlass® Gold exterior sheathing to the exterior side of the steel framing (Item 2) with the long dimension perpendicular to the steel studs. Secure using #6 1-1/4 in. long, Type S, screws spaced nominally 8 in. oc around the perimeter and 12 in. oc in the field.
5. WEATHER BARRIER: Install a single layer of vapor permeable barrier to the exterior side of the exterior sheathing (Item 4) with minimum 2 in. overlaps at the seams.
6. CERTIFIED COMPANY: Alucoil® North America, LLC
- CERTIFIED PRODUCT: Aluminum Composite Panels
- MODEL: larson® by Alucoil® FR 4 mm ACM Panels
- EXTERIOR VENEER: Install an ACM (Aluminum Composite Metal Panel) system consisting of the following elements:
- A. "L" CHANNELS: Install vertical aluminum "L" shaped channels secured through the exterior sheathing (Item 4) into the steel framing (Item 2) around the perimeter of the assembly. Secure clip extrusion channel into steel framing (Item 2) using #12-11 X 2 in. long self-drilling screws spaced maximum 24 in. oc.
- B. ALUMINUM COMPOSITE METAL PANEL: Install Alucoil® FR 6 mm ACM Panels to "L" channels (Item 7A) flush to the exterior sheathing (Item 4). Secure panels to "L" channels using #12-11 X 3/4 in. long stainless steel fasteners spaced nominal 18 in. oc.
- C. ALUMINUM EXTRUSIONS: Secure aluminum composite metal panels (Item 6B) in the field of the assembly using aluminum extrusions attached directly to the panels using #10 X 3/4 in. self-drilling hex head plated steel fasteners.
- D. BACKER ROD: Install nominal 1/2 in. diameter Tundra Foam, open cell backer rod in all horizontal and vertical seams between aluminum composite panels.
- E. SEALANT: Install DOW 795 over the backer rod (Item 6D) to bring the surface flush with the adjacent aluminum composite panels (Item 6B).

Date Created: August 28, 2012  
Project No: 100596374SAT-018B



©Intertek

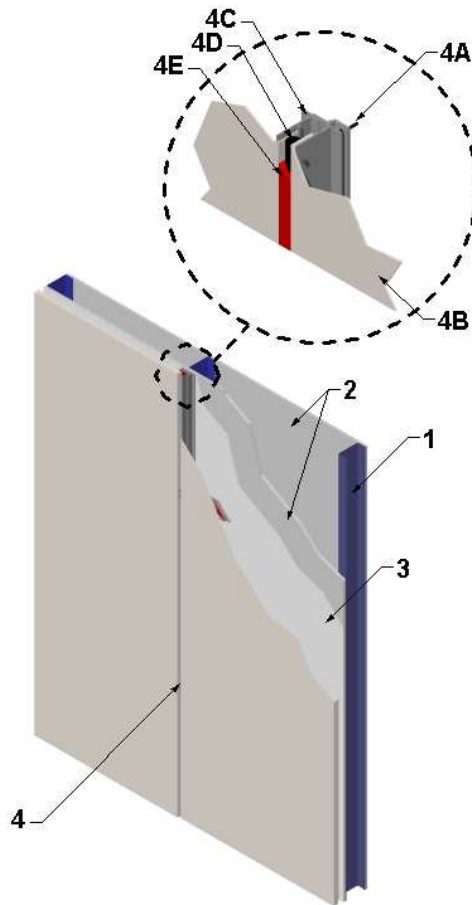


# ANA/MCMWP 60-01

Division 7 – Thermal and Moisture Protection  
07 42 00 Wall Panels  
07 42 13.23 Metal Composite Material Wall Panels

Page 1 of 2

Design Number ANA/MCMWP 60-01  
Non-Load Bearing Wall System  
Alucoil® North America, LLC  
Parson® by Alucoil® FR 4 mm ACM Panels  
ASTM E 119 (2012)  
CAN/ULC S 101 (2007)  
Rating: 1 Hour  
Interior Exposure Only



Construct 1-hour rated gypsum wall assembly using the following elements:

1. STEEL STUDS: Install nominal 3-5/8 in. deep, 18 gauge (GA) galvanized steel

studs spaced maximum 16 in. on center (oc). Friction-fit steel studs into 20 GA galvanized steel floor and ceiling track (Not Shown). Install lateral bracing (not shown) nominal 5 ft. oc vertically.

Date Revised: August 28, 2012  
Project No: 100596374SAT-018A



©Intertek

## ANA/MCMWP 60-01 (page 2 of 2)

### Division 7 – Thermal and Moisture Protection

#### 07 42 00 Wall Panels

#### 07 42 13.23 Metal Composite Material Wall Panels

Page 1 of 2

2. GYPSUM BOARD: Install nominal 5/8 in. thick Type X gypsum board to the interior and exterior sides of wall assembly. Install gypsum board with long edge perpendicular to steel studs and secure using #6 X 1-1/4 in. long self drilling zinc plated drywall screws spaced 8 in. oc around the perimeter and 12 in. oc in the field. Offset horizontal joints minimum 24 in. oc. After gypsum board is attached, apply a level 2 finish consisting of the following elements: Vinyl or casein, dry or premixed joint compound applied to the gypsum board in two coats to cover all exposed screw heads and gypsum board butt joints. Embed a minimum 2 in. wide paper, plastic, or fiberglass tape in first layer of compound over butt joints of the gypsum board.
3. WEATHER BARRIER: Install a single layer of vapor permeable barrier to the exterior side of the exterior gypsum board (Item 2) with minimum 2 in. overlaps at the seams.
4. CERTIFIED COMPANY: Alucoil® North America, LLC  
  
CERTIFIED PRODUCT: Aluminum Composite Panels  
  
MODEL: larson® by Alucoil® FR 4 mm ACM Panels  
  
EXTERIOR VENEER: Install an ACM (Aluminum Composite Metal Panel) system consisting of the following elements:
  - A. "L" CHANNELS: Install vertical aluminum "L" shaped channels secured through the exterior sheathing (Item 4) into the steel framing (Item 2) around the perimeter of the assembly. Secure clip extrusion channel into steel framing (Item 2) using #12-11 X 2 in. long self-drilling screws spaced maximum 24 in. oc.
  - B. ALUMINUM COMPOSITE METAL PANEL: Install Alucoil® FR 6 mm ACM Panels to "L" channels (Item 7A) flush to the exterior sheathing (Item 4). Secure panels to "L" channels using #12-11 X 3/4 in. long stainless steel fasteners spaced nominal 18 in. oc.
  - C. ALUMINUM EXTRUSIONS: Secure aluminum composite metal panels (Item 6B) in the field of the assembly using aluminum extrusions attached directly to the panels using #10 X 3/4 in. self-drilling hex head plated steel fasteners.
  - D. BACKER ROD: Install nominal 1/2 in. diameter Tundra Foam, open cell backer rod in all horizontal and vertical seams between aluminum composite panels.
  - E. SEALANT: Install DOW 795 over the backer rod (Item 6D) to bring the surface flush with the adjacent aluminum composite panels (Item 6B).

Date Revised: August 28, 2012  
Project No: 100596374SAT-018A



©Intertek